

# WATER SAFETY

OUR GOAL AT OKUMA BEACH IS TO PROVIDE YOU WITH A SAFE AND FUN ENVIRONMENT. PLEASE READ THROUGH THE FOLLOWING WATER SAFETY TIPS TO MAKE THE MOST OF YOUR STAY.



## DESIGNATED SWIMMING AREAS

### SOUTH BEACH

- Located on the south side of Okuma. This is the primary swimming area when water conditions allow from sunrise to sunset.

### NORTH BEACH

- Located on the north side of Okuma near the Welcome Center. Swimming is at your own risk and using the mandatory buddy system..

### WEST BEACH

- Located west of side of Okuma. Swimming is at your own risk and using the mandatory buddy system.

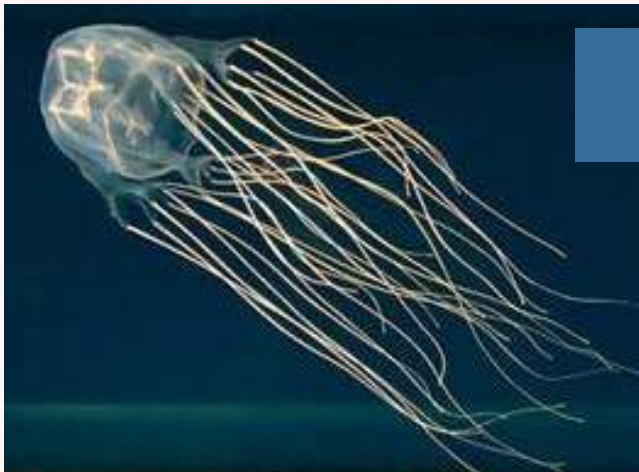
## EMERGENCY TELEPHONES

- South Beach: Building 120 & 121
- North Beach: Building 103
- Hillside Campground: Building 133



# OKUMA SITE COMMANDER POLICIES

- Water entry/operations are prohibited from sunset to sunrise.
- A lifeguard will be present on the South Beach to supervise the buoyed swimming area daily from 0900-1700.
- When a lifeguard is not present, buddy system is mandatory.
- Guests are responsible for knowing sea conditions prior to water entry.
- The Hillside Beach is **off limits** at all times.
- **Supervise children at all times.** Children under the age of 6 are to be within arm's reach of an adult (18 and older) supervisor.
- Guests are not permitted to participate in any water activity under the influence of alcohol or drugs.
- Personal and rented water craft operators and occupants will wear Personal Flotation Devices (PFD) at all times.
- Snorkelers will wear a snorkeling vest.
- We have PFDs and snorkeling vests available for use at Outdoor Recreation Equipment Rental facility, Building 121, for no charge.
- Cliff jumping/diving is PROHIBITED.
- Moorage, storage, and use of personally owned motorized crafts is not permitted or authorized on or from the Okuma Recreation Facility. This does not include kayaks.



## BOX JELLYFISH

The Okinawa prefecture Department of Welfare and Public Health Division has announced "Habu-Kurage (Box Jellyfish) Caution" warning from 1 June through 30 September. According to the division, there were 37 incidents of box jellyfish reported in on Okinawa in 2019. 10 of the 37 incidents occurred in the northern area.

The division recommends the following:

1. Limit exposing your skin while you are in the ocean as much as possible.
2. Take vinegar with you in case of emergency when you go to the beach.

## FIRST AID:

1. Ask for help.
2. Do NOT rub the affected area.
3. Apply VINEGAR. Do not use fresh water. Remove tentacles.
4. Cool the affected area with ice or cold water. Seek treatment at medical facility.



# SEA CONDITION WARNING FLAG

Posted flags indicate current sea conditions as indicated by Kadena Shogun Weather and/or Okuma Lifeguards.



## GREEN FLAG

### SEA CONDITION: ALL CLEAR

Clear, conditions are ideal for water activities.



## YELLOW FLAG

### SEA CONDITION: CAUTION

Caution, exercise caution when entering the water.



## RED FLAG

### SEA CONDITION: DANGER

Danger, entry to water is prohibited!

# RIP CORRENTS



## WHAT IS A RIP CURRENT?

A rip current is an intermittent, strong surface current flowing seaward from the shore.

## HOW CAN YOU IDENTIFY A RIP CURRENT?

Rip currents are usually identifiable by a line of turbid, foamy water moving away from the shore. They are usually narrow and disperse quickly in deeper water.

## WHAT SHOULD YOU DO IF YOU ARE CAUGHT IN A RIP CURRENT?

If you find yourself caught in a rip current, swim parallel to the shore, if possible. Wave and shout for help as soon as you realize you are being pulled to sea. Be sure to conserve your energy.